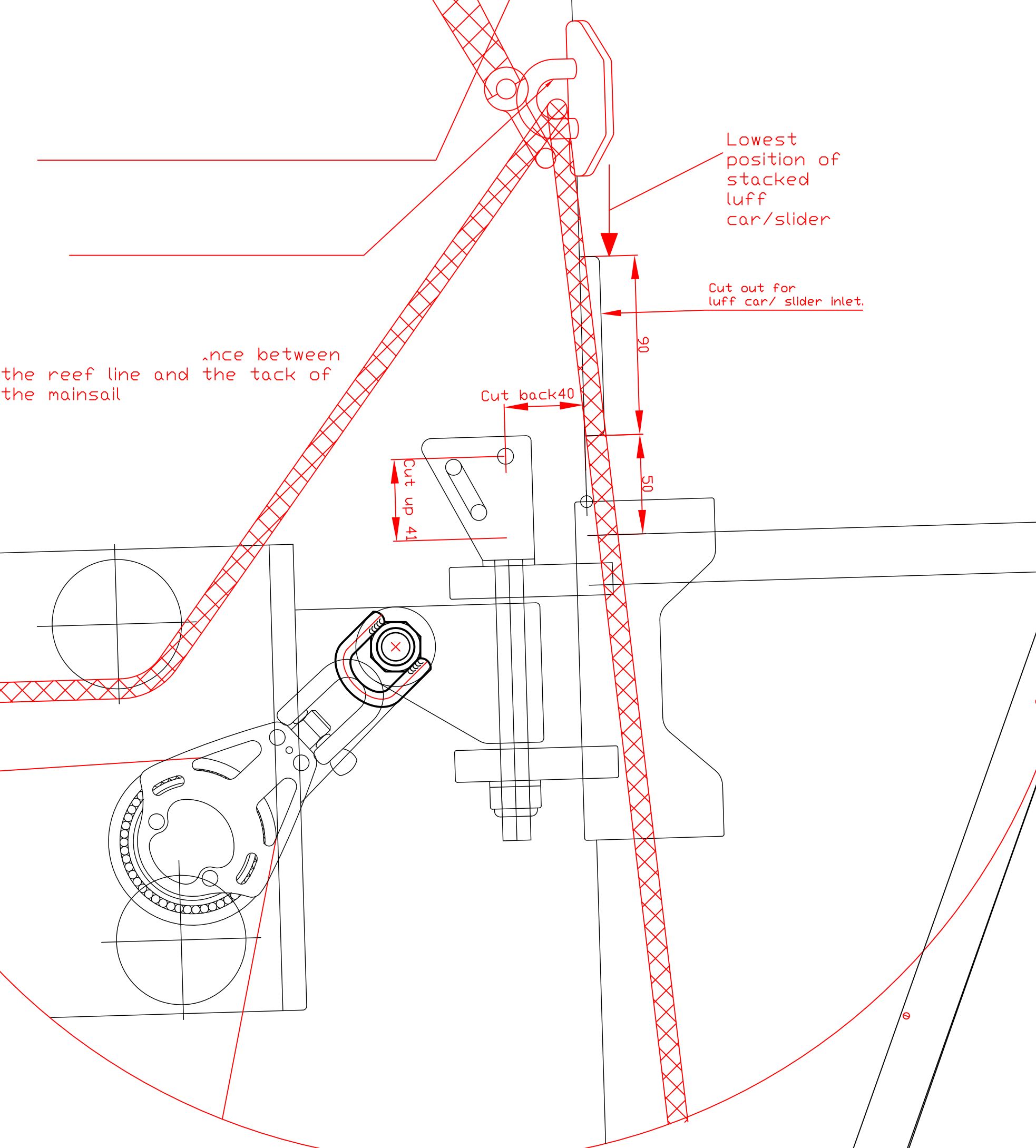
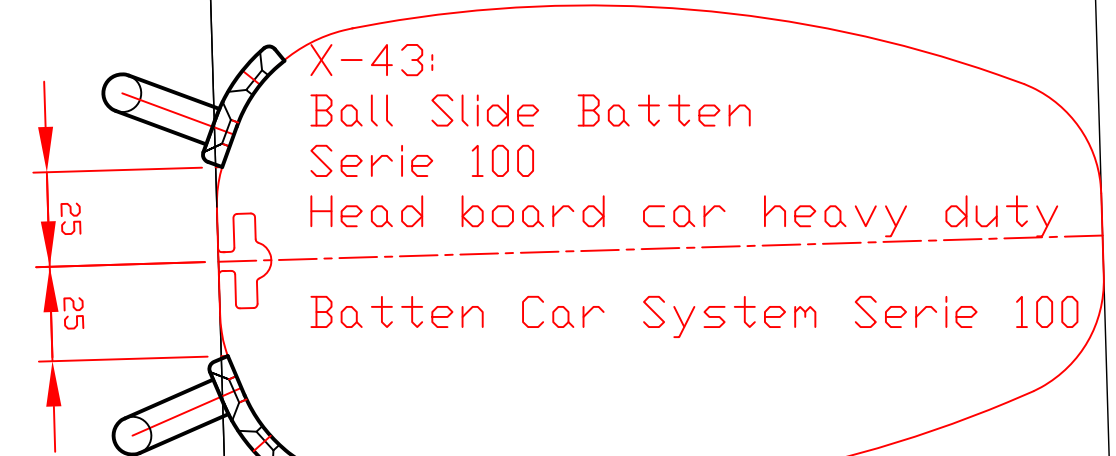


Gooseneck detail
Single line reef
detail
Scale 1:2

X-43

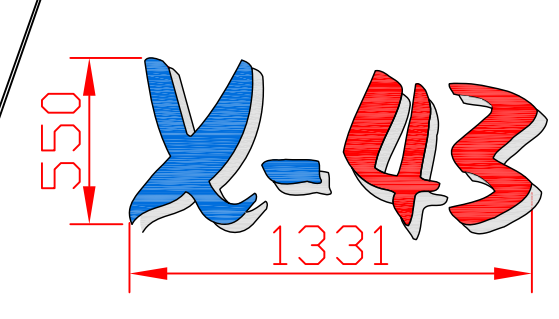
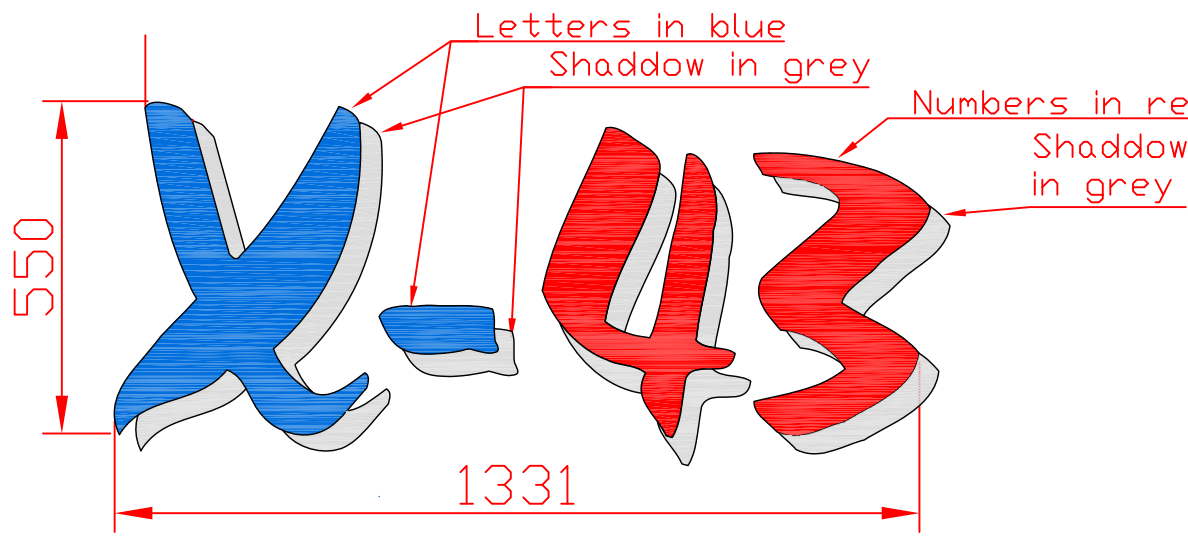
Webbing fitted to the sail, with e.g. a Wichard Allen Head Pin Shackle-D 10 mm in the lower end. The shackle must be fitted around the reef line.



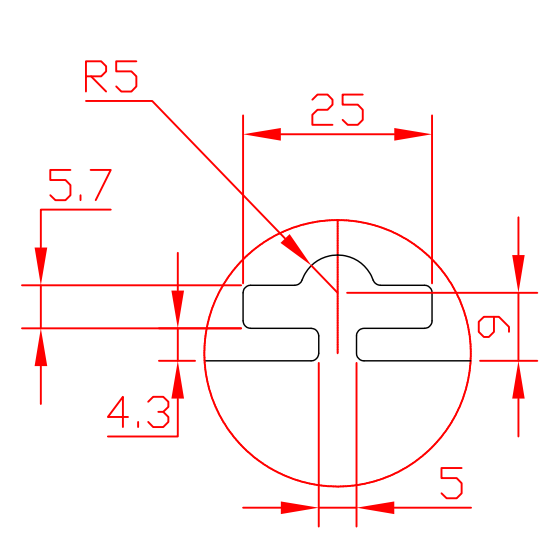
Recommended maximum mainsail measurements:
 HB=0,200
 MGT=1,11
 MGU=2,00
 MGM=3,53
 MGL=4,71
 With these measurements, the mainsail still hits the back stay if the sail are full battened.

Note:
 It is X-Yachts intension on the X-43 to do a reliable single reef line system. This is our 1st proposal for this system, and we will test the system and come back to you with possible changes.

Class mark:
 The surrounding black line is only for defining the extension of the colours.

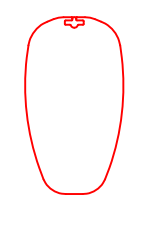


Mast and boom section scale 1:1

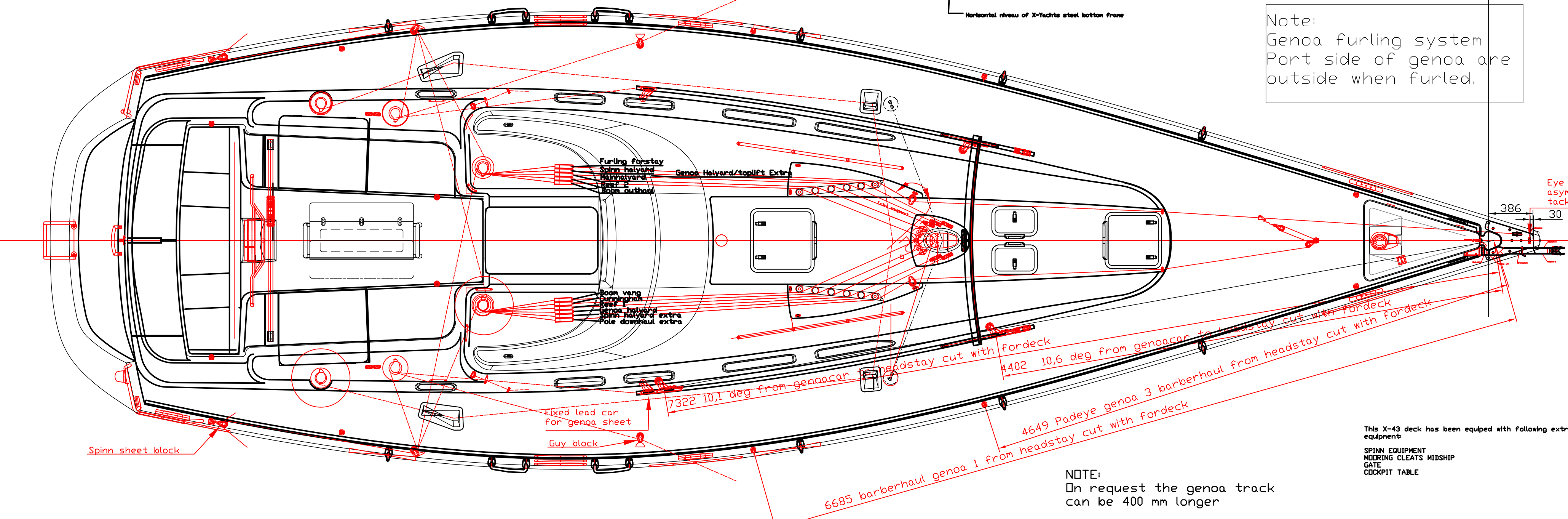
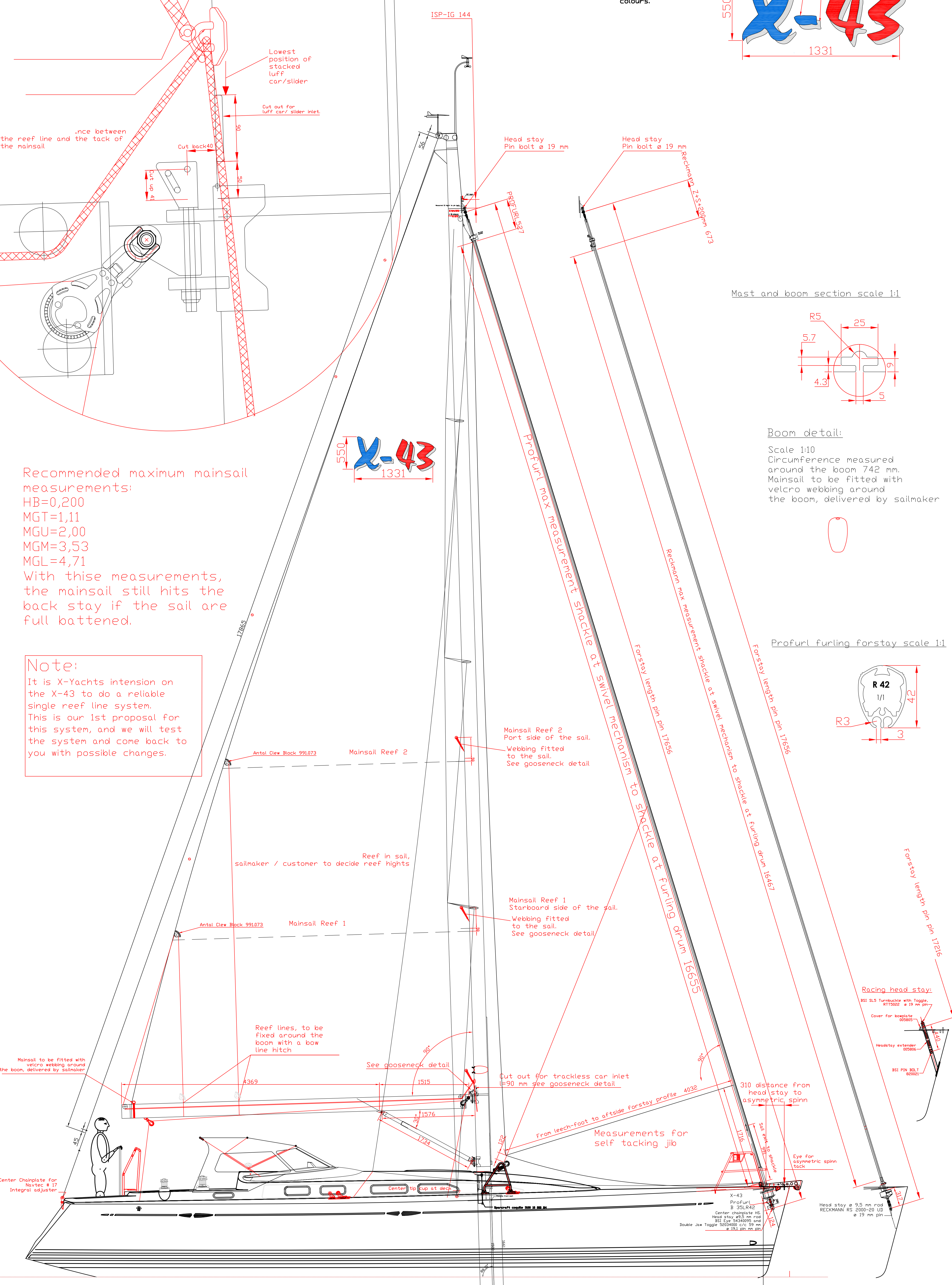
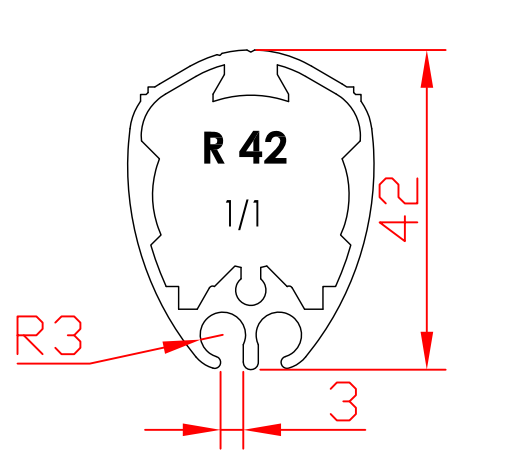


Boom detail:

Scale 1:10
 Circumference measured around the boom 742 mm. Mainsail to be fitted with velcro webbing around the boom, delivered by sailmaker



Profurl furling forstay scale 1:1



Note:
 Genoa furling system Port side of genoa are outside when furled.

X-43
 P=16,000
 E=5,800
 BAS=1,800
 IG=16,800
 J=4,664
 SPL=4,664
 TPS asymmetric spinn tack=4,974
 LP=6,36
 LPG=6,27
 ISP=16,944
 136% GENOA

NOTE:
 On request the genoa track can be 400 mm longer

This X-43 deck has been equipped with following extra equipments:
 SPINN EQUIPMENT
 HULLING CLEATS MIDSHIP
 GATE
 COCKPIT TABLE

REV 02-02-2004 Reckman Furling system profile changed to R03

Model	X-43
Designed by	Niels Jeppesen
Sail plan	16-09-2002
Created by	07-06-2008
Drawn by	ND
Checked by	-
Scale	1:25
Drawing no.	-